

Pediatric HIV/AIDS Cohort Study (PHACS)
AMP(PH200)/AMP Up (PH300)/AMP Up Lite (PH400)
Annual Administrative Report

Report Date: June 4, 2024

Data Retrieval Date: April 1, 2024

Created by:

Elham Sirag
Sara Caniglia
Yashodhan Aher
Matthew Cook
Kunjai Patel
Denise Jacobson
Kathy Tassiopoulos
Paige Williams

Data Management by:

Laurie Hyzy
Alexandria DiPerna

The Pediatric HIV/AIDS Cohort Study (PHACS) network is supported by the Eunice Kennedy Shriver National Institute of Child Health and Human Development with co-funding from other NIH institutes through cooperative agreements with the Harvard T.H. Chan School of Public Health (HD052102), Tulane University School of Medicine (HD052104), and Harvard T.H. Chan School of Public Health for the Pediatric HIV/AIDS Cohort Study 2020 network (P01HD103133).

Table of Contents

TABLE OF CONTENTS	2
TABLE OF TABLES.....	3
TABLE OF FIGURES	4
1 ENROLLMENT AND DEMOGRAPHIC CHARACTERISTICS.....	5
1.1 Enrollment.....	5
1.2 Demographic Characteristics	5
1.3 Entry Visit and Current Status	5
1.4 Select Follow-up Characterisitcs as of Last Clinic Visit	5
2 CHARACTERISTICS OF PARTICIPANTS STILL ON STUDY.....	6
2.1 Age and HIV Clinical Characteristics	6
2.2 ARV Use in the AMP and AMP Up Studies	6
3 TABLES AND FIGURES	8

Table of Tables

Table 1: AMP - Study Enrollment by Cohort and Quarter 8

Table 2: AMP Up - Study Enrollment by Cohort and Quarter 9

Table 3: AMP Up Lite - Study Enrollment by Quarter 10

Table 4: AMP - Study Enrollment by Site..... 11

Table 5: AMP Up - Study Enrollment by Site..... 11

Table 6: AMP Up Lite - Study Enrollment by Site 12

Table 7: AMP - Enrollment by Previous Protocol Participation 13

Table 8: AMP Up - Enrollment by Previous Protocol Participation..... 14

Table 9: AMP - Enrollment Demographics and Consent Information 15

Table 10: AMP Up - Enrollment Demographics and Consent Information..... 16

Table 11: AMP Up Lite - Enrollment Demographics and Consent Information 17

Table 12: AMP, AMP Up and AMP Up Lite - Entry Visit Status..... 18

Table 13: AMP, AMP Up and AMP Up Lite - Study Status..... 18

Table 14: AMP/AMP Up/AMP Up Lite Select Follow-up Characteristics of All Enrolled Participants with an Entry Visit as of Last Clinic Visit..... 19

Table 15: AMP/AMP Up/AMP Up Lite - Deaths by Demographic and Clinical Characteristics 21

Table 16: AMP Up - Age as of Last In-person Visit or Chart Abstraction Date of Participants Still on Study 22

Table 17: AMP Up Lite - Age as of Last In-person Visit or Chart Abstraction Date of Participants Still on Study 22

Table 18: AMP - Clinical Characteristics as of Last In-person Visit or Chart Abstraction Date of Participants Living with Perinatal HIV..... 23

Table 19: AMP Up/AMP Up Lite - Clinical Characteristics as of Last In-person Visit or Chart Abstraction Date of Participants Living with Perinatal HIV Still on Study 24

Table 20: AMP Up - Individual ARV Drugs at Entry 25

Table 21: AMP Up Lite - Individual ARV Drugs at Entry..... 26

Table 22: AMP Up - Individual ARV Drugs at Last Clinical Visit for Participants Still On Study 27

Table 23: AMP Up Lite - Individual ARV Drugs at Last Clinical Visit for Participants Still On Study 28

Table 24: AMP - Lifetime Exposure to ARV Drug Classes and Individual Drugs, From Reported Regimens 29

Table of Figures

Figure 1: AMP/AMP Up - ARV Trends Over Time (1993 - 2023).....	30
Figure 2: AMP/AMP Up - NRTI Use, 1993 - 2023.....	31
Figure 3: AMP/AMP Up - NNRTI Use, 1993 - 2023.....	32
Figure 4: AMP/AMP Up - PI Use, 1993 - 2023.....	33
Figure 5: AMP/AMP Up - FI/EI and INSTI Use, 1993 - 2023.....	34
Figure 6: AMP Up Lite - ARV Trends Over Time (2017-2023)	35
Figure 7: AMP Up Lite - NRTI Use, 2017 - 2023	36
Figure 8: AMP Up Lite - NNRTI Use, 2017 - 2023	37
Figure 9: AMP Up Lite - PI Use, 2017 - 2023	38
Figure 10: AMP Up Lite - FI/EI and INSTI Use, 2017 - 2023	39

1 Enrollment and Demographic Characteristics

1.1 Enrollment

Table 1 - Table 3 show enrollment by cohort and quarter into AMP, AMP Up and AMP Up Lite, respectively. AMP first enrolled youth living with perinatally-acquired HIV (YPHIV) in the first quarter of 2007 and youth who were perinatally HIV-exposed but without perinatally-acquired HIV (YPHEU) in the second quarter of 2007. Enrollment into AMP ended in 2009 with 451 YPHIV and 227 YPHEU; AMP follow-up ended in February 2020. AMP Up enrolls young adults with PHIV (YAPHIV) and PHEU (YAPHEU) previously enrolled in AMP and from participating sites – enrollment began in the second quarter of 2014 and is ongoing. AMP Up Lite only enrolls YAPHIV from select sites not participating in the AMP and AMP Up studies - the enrollment was started in the third quarter of 2017 and is ongoing. **Table 4 - Table 6** show enrollment by cohort and site into AMP, AMP Up and AMP Up Lite, respectively.

Table 7 summarizes prior participation in approved IMPAACT and other network protocols among AMP participants. **Table 8** shows the number of AMP Up participants who were previously enrolled in AMP and other protocols. AMP Up Lite did not collect information on the participants' prior participation in PHACS or non-PHACS studies.

1.2 Demographic Characteristics

Demographic characteristics and consent information of the participants in AMP, AMP Up and AMP Up Lite are summarized in **Table 9 - Table 11**, respectively.

1.3 Entry Visit and Current Status

The number of entry visits in AMP, AMP Up and AMP Up Lite are shown by PHIV status in **Table 12**. Of the participants enrolled in AMP, 448 of 451 (99%) YPHIV and 226 of 227 (99.6%) YPHEU reported an entry study visit. Of the participants enrolled in AMP Up, 669 of 672 (99.6%) YAPHIV and 136 of 137 (99.3%) YAPHEU have reported an entry study visit. Of the participants enrolled in AMP Up Lite, 334 of 334 (100%) YAPHIV have reported an entry study visit.

Table 13 shows the study status of AMP participants and enrollment into AMP Up for those who have reached 18 years-of-age. Of the AMP participants age 18 and older (N=645), 521 (81%) completed the study, 123 (19%) were lost to follow-up, and no children were still on study. Of those 18+ who completed the study, 396 (76%) have already enrolled in AMP Up. Of the 18+ lost to follow-up, 30 (24%) enrolled in AMP Up. In addition, **Table 13** shows the study status of AMP Up participants. Two AMP Up participants were inadvertently taken off study and hope to be brought back on for V2.0. Finally, **Table 13** shows the study status of AMP Up Lite participants. Out of 334 participants, 287 (86%) are still on study.

1.4 Select Follow-up Characteristics as of Last Clinic Visit

Selected follow-up characteristics of all enrolled participants with an entry visit as of last clinic visit are summarized by study (AMP, AMP Up vs AMP Up Lite), PHIV status and sex in **Table 14**. Such characteristics include age, pregnancy measures (ever been pregnant and the number of completed

pregnancies), HIV seroconversion and death. Completed pregnancies include live births, spontaneous/elective abortions and still births. No AMP YPHEU participants seroconverted to HIV, but one male AMP Up YAPHEU participant seroconverted to HIV. Of 209 male and 239 female AMP YPHIV participants, 4 and 2 have died, respectively. Of 259 male and 410 female AMP Up YAPHIV participants, 10 and 20 have died, respectively. Of 124 male and 210 female AMP Up Lite YAPHIV participants, 4 and 2 have died, respectively. **Table 15** summarizes the demographic and clinical characteristics at death for those participants in AMP/AMP Up and AMP Up Lite (PHIV) who have died.

2 Characteristics of Participants Still on Study

2.1 Age and HIV Clinical Characteristics

All AMP participants are now off the AMP study and thus only the age (by PHIV status) of AMP Up and AMP Up Lite participants still on study at their last clinic visit is shown in **Table 16** and **Table 17**, respectively. **Table 18** shows HIV clinical characteristics and ARV regimens at the last visit of YPHIV in AMP. **Table 19** shows HIV clinical characteristics and ARV regimens at the last visit of YAPHIV in AMP Up and AMP Up Lite who were still on study. Of note, a large proportion (46-47%) of YAPHIV in AMP Up and AMP Up Lite are missing CD4 and VL measurements within 12 months prior to their last in-person or chart abstraction visit.

2.2 ARV Use in the AMP and AMP Up Studies

Table 20 and **Table 21** show the frequencies of ARV drugs used at the entry visit among YAPHIV in AMP Up and AMP Up Lite who were still on study, respectively. **Table 22** and **Table 23** show the frequencies of ARV drugs at the last clinical visit among YAPHIV in AMP Up and AMP Up Lite who were still on study, respectively. **Table 24** shows the frequencies of lifetime exposure to ARV classes and individual ARV drugs among AMP participants based on reported regimens. A participant is counted as having taken a drug if any of their reported regimens included the drug.

Figure 1 through **Figure 5** display ARV use among participants with PHIV in AMP/AMP Up (treated as a single study) between 1993 and the end of 2023. For each calendar year, lines indicate the percent exposed among the AMP/AMP Up participants born that year or previously. Participants who were off AMP/AMP Up are included through the year of the date on their final ARV medication form or the date they became off study, whichever was earlier. Participants who were still on study were included through the year of the date on their most recent ARV medication form through the end of 2023. Participants may be exposed to more than one regimen during a calendar year and contribute to any line indicating a regimen/drug to which they were exposed. **Figure 1** shows ARV regimen trends for AMP/AMP Up participants with the following hierarchical ARV groupings: cART with INSTI/EI/FI > cART with PI > cART with NNRTI > other ART > 1 or 2 NRTIs > No ART. For instance, if a participant was exposed to any

INSTI, disregarding whether or not they were also exposed to PI or NNRTI, their ARV exposure would be grouped as cART w/ INSTI/EI/FI. No ART indicates a drug holiday of more than 2 months (greater than 56 days). **Figure 2** through **Figure 5** show the frequencies of exposure to ARV drug classes and individual ARV drugs.

Figure 6 - Figure 10 display ARV use among AMP Up Lite participants between 2017 and the end of 2023. For each calendar year, lines indicate the percent exposed during that year. Participants who were off AMP Up Lite are included through the year of the date they became off study. Participants who were still on study were included from their study entry up to April 1, 2024. Participants may be exposed to more than one regimen during a calendar year and contribute to any line indicating a regimen/drug to which they were exposed. **Figure 6** shows ARV regimen trends for AMP Up Lite participants with the same hierarchical ARV groupings as the AMP/AMP Up participants. **Figure 7** through **Figure 10** show the frequencies of exposure to ARV drug classes and individual ARV drugs.

3 Tables and Figures

Table 1: AMP - Study Enrollment by Cohort and Quarter

		Cohort		
		Caregiver (N=588)	PHIV (N=451)	PHEU (N=227)
Enrollment quarter	2007 Q1	8 (1%)	9 (2%)	0 (0%)
	2007 Q2	51 (9%)	52 (12%)	3 (1%)
	2007 Q3	64 (11%)	61 (14%)	12 (5%)
	2007 Q4	74 (13%)	66 (15%)	14 (6%)
	2008 Q1	46 (8%)	33 (7%)	24 (11%)
	2008 Q2	45 (8%)	38 (8%)	14 (6%)
	2008 Q3	53 (9%)	54 (12%)	17 (7%)
	2008 Q4	21 (4%)	12 (3%)	22 (10%)
	2009 Q1	39 (7%)	18 (4%)	39 (17%)
	2009 Q2	77 (13%)	53 (12%)	38 (17%)
	2009 Q3	66 (11%)	42 (9%)	44 (19%)
	2009 Q4	16 (3%)	13 (3%)	0 (0%)
	2010 or Later	28 (5%)	0 (0%)	0 (0%)

Note: PHIV, perinatally-acquired HIV; PHEU, perinatal HIV-exposure without perinatally-acquired HIV. Participant enrollment ended in 2009, but caregivers continue to change/enroll.

Created by: /home/phacs/actgPH200/monitoring/programs/working/april_rerun/qad_1.sas on May 23, 2024

Table 2: AMP Up - Study Enrollment by Cohort and Quarter

		Cohort	
		PHIV (N=672)	PHEU (N=137)
Enrollment quarter	2014 Q2	22 (3%)	3 (2%)
	2014 Q3	48 (7%)	13 (9%)
	2014 Q4	52 (8%)	11 (8%)
	2015 Q1	20 (3%)	4 (3%)
	2015 Q2	20 (3%)	12 (9%)
	2015 Q3	37 (6%)	5 (4%)
	2015 Q4	32 (5%)	6 (4%)
	2016 Q1	29 (4%)	8 (6%)
	2016 Q2	44 (7%)	4 (3%)
	2016 Q3	24 (4%)	4 (3%)
	2016 Q4	49 (7%)	4 (3%)
	2017 Q1	40 (6%)	1 (1%)
	2017 Q2	23 (3%)	4 (3%)
	2017 Q3	17 (3%)	2 (1%)
	2017 Q4	7 (1%)	4 (3%)
	2018 Q1	22 (3%)	6 (4%)
	2018 Q2	22 (3%)	3 (2%)
	2018 Q3	17 (3%)	5 (4%)
	2018 Q4	11 (2%)	4 (3%)
	2019 Q1	16 (2%)	5 (4%)
	2019 Q2	24 (4%)	2 (1%)
	2019 Q3	10 (1%)	4 (3%)
	2019 Q4	8 (1%)	4 (3%)
	2020 Q1	5 (1%)	1 (1%)
	2020 Q2	1 (0%)	3 (2%)
	2020 Q3	9 (1%)	1 (1%)
	2020 Q4	5 (1%)	2 (1%)
	2021 Q1	4 (1%)	1 (1%)
	2021 Q2	5 (1%)	2 (1%)
	2021 Q3	3 (0%)	0 (0%)
	2021 Q4	5 (1%)	1 (1%)
	2022 Q1	4 (1%)	1 (1%)
2022 Q2	3 (0%)	0 (0%)	
2022 Q3	4 (1%)	0 (0%)	
2022 Q4	1 (0%)	1 (1%)	
2023 Q1	1 (0%)	1 (1%)	
2023 Q2	5 (1%)	1 (1%)	
2023 Q3	6 (1%)	3 (2%)	
2023 Q4	9 (1%)	0 (0%)	
2024 Q1	8 (1%)	1 (1%)	

Note: PHIV, perinatally-acquired HIV; PHEU, perinatal HIV exposure but without perinatally-acquired HIV

Created by: /home/phacs/actgPH300/monitoring/programs/qad.sas on May 12, 2024

Table 3: AMP Up Lite - Study Enrollment by Quarter

		Cohort YAPHIV (N=334)
Enrollment quarter	2017 Q3	18 (5%)
	2017 Q4	89 (27%)
	2018 Q1	25 (7%)
	2018 Q2	17 (5%)
	2018 Q3	11 (3%)
	2018 Q4	15 (4%)
	2019 Q1	10 (3%)
	2019 Q2	35 (10%)
	2019 Q3	15 (4%)
	2019 Q4	22 (7%)
	2020 Q1	24 (7%)
	2020 Q3	1 (0%)
	2020 Q4	10 (3%)
	2021 Q1	6 (2%)
	2021 Q2	7 (2%)
	2021 Q3	2 (1%)
	2021 Q4	3 (1%)
	2022 Q1	3 (1%)
	2022 Q2	2 (1%)
	2022 Q3	1 (0%)
	2022 Q4	1 (0%)
	2023 Q1	3 (1%)
	2023 Q2	2 (1%)
	2023 Q3	6 (2%)
2023 Q4	4 (1%)	
2024 Q1	2 (1%)	

Note: YAPHIV, young adult with perinatally-acquired HIV

Created by: /home/phacs/actgPH400/monitoring/programs/qad.sas on May 12, 2024

Table 4: AMP - Study Enrollment by Site

Enrollment site	Cohort		
	Total (N=678)	PHIV (N=451)	PHEU (N=227)
BOSTON CHILDREN'S HOSPITAL	39 (6%)	35 (8%)	4 (2%)
ST. CHRISTOPHER'S HOSPITAL FOR CHILDREN	40 (6%)	27 (6%)	13 (6%)
SAN JUAN RESEARCH HOSPITAL	54 (8%)	27 (6%)	27 (12%)
ST. JUDE CHILDREN'S RESEARCH HOSPITAL	41 (6%)	29 (6%)	12 (5%)
UNIV OF COLORADO HEALTH SCIENCES CENTER	41 (6%)	21 (5%)	20 (9%)
NEW JERSEY MEDICAL CENTER	53 (8%)	46 (10%)	7 (3%)
CHILDREN'S DIAG AND TREAT CTR (S FLOR)	20 (3%)	14 (3%)	6 (3%)
BRONX/LEBANON HOSPITAL CENTER	37 (5%)	17 (4%)	20 (9%)
UNIVERSITY OF MIAMI	57 (8%)	38 (8%)	19 (8%)
TEXAS CHILDREN'S HOSPITAL (BAYLOR)	53 (8%)	23 (5%)	30 (13%)
UNIVERSITY HEALTH SCIENCE CTR (TULANE)	28 (4%)	23 (5%)	5 (2%)
UCSD MEDICAL CENTER	34 (5%)	17 (4%)	17 (7%)
UNIVERSITY OF MARYLAND MED CTR	31 (5%)	23 (5%)	8 (4%)
JACOBI MEDICAL CENTER	53 (8%)	37 (8%)	16 (7%)
CHILDREN'S MEMORIAL HOSPITAL OF CHICAGO	97 (14%)	74 (16%)	23 (10%)

Note: PHIV, perinatally-acquired HIV; PHEU, perinatal HIV-exposure without perinatally-acquired HIV.

Created by: /home/phacs/actgPH200/monitoring/programs/working/april_rerun/qad_1.sas on May 23, 2024

Table 5: AMP Up - Study Enrollment by Site

Enrollment site	Cohort		
	Total (N=809)	PHIV (N=672)	PHEU (N=137)
BOSTON CHILDREN'S HOSPITAL	52 (6%)	52 (8%)	0 (0%)
ST. CHRISTOPHER'S HOSPITAL FOR CHILDREN	41 (5%)	31 (5%)	10 (7%)
SAN JUAN RESEARCH HOSPITAL	71 (9%)	54 (8%)	17 (12%)
ST. JUDE CHILDREN'S RESEARCH HOSPITAL	59 (7%)	51 (8%)	8 (6%)
UNIV OF COLORADO HEALTH SCIENCES CENTER	70 (9%)	57 (8%)	13 (9%)
NEW JERSEY MEDICAL CENTER	75 (9%)	70 (10%)	5 (4%)
CHILDREN'S DIAG AND TREAT CTR (S FLOR)	34 (4%)	30 (4%)	4 (3%)
BRONX/LEBANON HOSPITAL CENTER	59 (7%)	38 (6%)	21 (15%)
UNIVERSITY OF MIAMI	72 (9%)	65 (10%)	7 (5%)
TEXAS CHILDREN'S HOSPITAL (BAYLOR)	55 (7%)	34 (5%)	21 (15%)
UNIVERSITY HEALTH SCIENCE CTR (TULANE)	35 (4%)	31 (5%)	4 (3%)
UCSD MEDICAL CENTER	38 (5%)	30 (4%)	8 (6%)
JACOBI MEDICAL CENTER	75 (9%)	64 (10%)	11 (8%)
CHILDREN'S MEMORIAL HOSPITAL OF CHICAGO	73 (9%)	65 (10%)	8 (6%)

Note: PHIV, perinatally-acquired HIV; PHEU, perinatal HIV exposure but without perinatally-acquired HIV

Created by: /home/phacs/actgPH300/monitoring/programs/qad.sas on May 12, 2024

Table 6: AMP Up Lite - Study Enrollment by Site

	Cohort YAPHIV (N=334)
Enrollment site NYU MEDICAL CTR/BELLEVUE	49 (15%)
ST. CHRISTOPHER'S HOSPITAL FOR CHILDREN	9 (3%)
UNIVERSITY OF ALABAMA AT BIRMINGHAM	23 (7%)
UNIVERSITY OF SOUTHERN CALIFORNIA	37 (11%)
SAN JUAN RESEARCH HOSPITAL	2 (1%)
SUNY DOWNSTATE MEDICAL CENTER	63 (19%)
UNIVERSITY OF FLORIDA HEALTH SCIENCE CTR	39 (12%)
TEXAS CHILDREN'S HOSPITAL (BAYLOR)	9 (3%)
BOSTON MEDICAL CENTER PEDIATRIC HIV PROGRAM	29 (9%)
DAVID GEFFEN SCHOOL OF MEDICINE AT UCLA	8 (2%)
JOHNS HOPKINS UNIVERSITY BALTIMORE	22 (7%)
RUSH UNIVERSITY COOK COUNTY HOSPITAL CHICAGO	19 (6%)
SUNY STONY BROOK	16 (5%)
UNIVERSITY OF WASHINGTON CHILDRENS HOSPITAL SEATTLE	9 (3%)

Note: YAPHIV, young adults with perinatally-acquired HIV

Created by: /home/phacs/actgPH400/monitoring/programs/qad.sas on May 12, 2024

Table 7: AMP - Enrollment by Previous Protocol Participation

Protocol group	Studies	PHIV (N=451)	PHEU (N=227)
No Previous Protocol	None	87 (19%)	64 (28%)
219/219C Only	219/219C	292 (65%)	97 (43%)
	219	5 (1%)	5 (2%)
	Total	297 (66%)	102 (45%)
219/219C + Other	219C+ACTG 316	1 (0%)	0 (0%)
	219/219C+WITS	17 (4%)	7 (3%)
	Total	18 (4%)	7 (3%)
WITS Only	WITS	0 (0%)	33 (15%)
Other PACTG/IMPAACT	P1057	1 (0%)	0 (0%)
	ACTG 353	0 (0%)	2 (1%)
	ACTG 326	0 (0%)	1 (0%)
	ACTG 316	0 (0%)	6 (3%)
	ACTG 185	2 (0%)	0 (0%)
	Total	3 (1%)	9 (4%)
Other	PACTS HOPE	0 (0%)	11 (5%)
	LEGACY	46 (10%)	0 (0%)
	257	0 (0%)	1 (0%)
	Total	46 (10%)	12 (5%)

Note: PHIV, perinatally-acquired HIV; PHEU, perinatal HIV-exposure without perinatally-acquired HIV.

Created by: /home/phacs/actgPH200/monitoring/programs/working/april_rerun/qad_1.sas on May 23, 2024

Table 8: AMP Up - Enrollment by Previous Protocol Participation

Protocol group	Studies	PHIV (N=672)	PHEU (N=137)
No Previous Protocol	None	109 (16%)	0 (0%)
AMP Only	PH200	83 (12%)	37 (27%)
AMP + Other	PH200+P219/P219C	183 (27%)	16 (12%)
	PH200+P219/P219C+P1074	5 (1%)	0 (0%)
	PH200+P219/P219C+PH100	22 (3%)	48 (35%)
	PH200+PH100	8 (1%)	24 (18%)
	Total	218 (32%)	88 (64%)
P219/P219C Only	P219/P219C	32 (5%)	0 (0%)
P219/P219C + Other	P219/P219C+P1074	101 (15%)	0 (0%)
	P219/P219C+P1074+PH100	27 (4%)	0 (0%)
	P219/P219C+PH100	30 (4%)	8 (6%)
	Total	158 (24%)	8 (6%)
P1074 Only	P1074	35 (5%)	0 (0%)
P1074 + Other	P1074+PH100	5 (1%)	0 (0%)
PH100 Only	PH100	32 (5%)	4 (3%)

Note: PHIV: perinatally-acquired HIV; PHEU, perinatal HIV exposure but without perinatally-acquired HIV

Created by: /home/phacs/actgPH300/monitoring/programs/qad.sas on May 12, 2024

Table 9: AMP - Enrollment Demographics and Consent Information

		Cohort		
		Total (N=678)	PHIV (N=451)	PHEU (N=227)
Sex	Male	328 (48%)	210 (47%)	118 (52%)
	Female	350 (52%)	241 (53%)	109 (48%)
Age at enrollment (years)	Median (Q1, Q3)	11 (9, 14)	12 (10, 14)	10 (8, 12)
	7-9	229 (34%)	118 (26%)	111 (49%)
	10-12	235 (35%)	154 (34%)	81 (36%)
	13-15	214 (32%)	179 (40%)	35 (15%)
Race	Asian	6 (1%)	2 (0%)	4 (2%)
	Black or African American	454 (67%)	316 (70%)	138 (61%)
	White	173 (26%)	98 (22%)	75 (33%)
	American Indian	3 (0%)	3 (1%)	0 (0%)
	More than One Race	13 (2%)	9 (2%)	4 (2%)
	Participant does not want to report	17 (3%)	15 (3%)	2 (1%)
	Participant does not know	8 (1%)	6 (1%)	2 (1%)
	Race not available to clinic	4 (1%)	2 (0%)	2 (1%)
Ethnicity	Hispanic or Latino	189 (28%)	109 (24%)	80 (35%)
	Not Hispanic or Latino	485 (72%)	341 (76%)	144 (63%)
	Participant does not want to report	4 (1%)	1 (0%)	3 (1%)
Consent to share IMPAACT, WITS, or medical rec data?	Yes	662 (98%)	441 (98%)	221 (97%)
	No	4 (1%)	4 (1%)	0 (0%)
	Unknown	12 (2%)	6 (1%)	6 (3%)
Permission to store specimen in repository	No	6 (1%)	5 (1%)	1 (0%)
	Yes	672 (99%)	446 (99%)	226 (100%)
Permission includes genetic studies	No	9 (1%)	8 (2%)	1 (0%)
	Yes	669 (99%)	443 (98%)	226 (100%)

Note: PHIV, perinatally-acquired HIV; PHEU, perinatal HIV-exposure without perinatally-acquired HIV

Created by: /home/phacs/actgPH200/monitoring/programs/working/april_rerun/qad_1.sas on May 23, 2024

Table 10: AMP Up - Enrollment Demographics and Consent Information

		Cohort		
		Total (N=809)	PHIV (N=672)	PHEU (N=137)
Sex	Male	329 (41%)	261 (39%)	68 (50%)
	Female	480 (59%)	411 (61%)	69 (50%)
Age at enrollment (years)	Median (Q1, Q3)	20 (18, 24)	21 (18, 25)	18 (18, 19)
	Min, Max	18, 39	18, 39	18, 25
	18-19	359 (44%)	247 (37%)	112 (82%)
	20-21	143 (18%)	125 (19%)	18 (13%)
	22-23	84 (10%)	79 (12%)	5 (4%)
	24-25	75 (9%)	73 (11%)	2 (1%)
	26-27	57 (7%)	57 (8%)	0 (0%)
	28-29	20 (2%)	20 (3%)	0 (0%)
	30 or Older	71 (9%)	71 (11%)	0 (0%)
	Race	Asian	4 (0%)	1 (0%)
Native Hawaiian or other Pacific Islander		3 (0%)	3 (0%)	0 (0%)
Black or African American		538 (67%)	453 (67%)	85 (62%)
White		207 (26%)	164 (24%)	43 (31%)
American Indian		4 (0%)	4 (1%)	0 (0%)
More than One Race		17 (2%)	14 (2%)	3 (2%)
Unknown		36 (4%)	33 (5%)	3 (2%)
Ethnicity	Hispanic or Latino	235 (29%)	188 (28%)	47 (34%)
	Not Hispanic or Latino	565 (70%)	478 (71%)	87 (64%)
	Unknown	9 (1%)	6 (1%)	3 (2%)
Permission to store specimen in repository	Yes	798 (99%)	662 (99%)	136 (100%)
	No	5 (1%)	5 (1%)	0 (0%)
	Not asked during re-consent	1 (0%)	1 (0%)	0 (0%)
	Unknown	5	4	1
Permission includes genetic studies	Yes	791 (98%)	657 (98%)	134 (99%)
	No	12 (1%)	10 (1%)	2 (1%)
	Not asked during re-consent	1 (0%)	1 (0%)	0 (0%)
	Unknown	5	4	1

Note: PHIV, perinatally-acquired HIV; PHEU, perinatal HIV exposure but without perinatally-acquired HIV

Created by: /home/phacs/actgPH300/monitoring/programs/qad.sas on May 12, 2024

Table 11: AMP Up Lite - Enrollment Demographics and Consent Information

		Cohort YAPHIV (N=334)
Sex	Male	124 (37%)
	Female	210 (63%)
Age at enrollment (years)	Median (Q1, Q3)	25 (21, 28)
	Min, Max	18, 40
	18-19	43 (13%)
	20-21	45 (13%)
	22-23	53 (16%)
	24-25	46 (14%)
	26-27	51 (15%)
	28-29	39 (12%)
	30 or Older	57 (17%)
Race	Asian	6 (2%)
	Native Hawaiian or other Pacific Islander	1 (0%)
	Black or African American	216 (65%)
	White	84 (25%)
	American Indian	1 (0%)
	More than One Race	5 (1%)
	Unknown	21 (6%)
Ethnicity	Hispanic or Latino	75 (22%)
	Not Hispanic or Latino	254 (76%)
	Unknown	5 (1%)
Permission to use samples for future general tests	Yes	280 (84%)
	No	54 (16%)
Permission to use samples for future special studies	Yes	272 (81%)
	No	62 (19%)

Note: YAPHIV, young adults with perinatally-acquired HIV

Created by: /home/phacs/actgPH400/monitoring/programs/qad.sas on May 12, 2024

Table 12: AMP, AMP Up and AMP Up Lite - Entry Visit Status

		Study and HIV Status				
		AMP PHIV (N=451)	AMP PHEU (N=227)	AMP Up PHIV (N=672)	AMP Up PHEU (N=137)	AMP Up Lite PHIV (N=334)
Entry visit status	Visit reported	448 (99%)	226 (100%)	669 (100%)	136 (99%)	334 (100%)
	No visit reported	3 (1%)	1 (0%)	3 (0%)	1 (1%)	0 (0%)

Note: PHIV, perinatally-acquired HIV; PHEU, perinatal HIV exposure but without perinatally-acquired HIV

Created by: /home/phacs/actgPH300/monitoring/programs/qad.sas on May 12, 2024

Table 13: AMP, AMP Up and AMP Up Lite - Study Status

		Cohort		
		Total	PHIV	PHEU
AMP study status	Completed study	521 (77%)	341 (76%)	180 (79%)
	Enrollment error / eligibility failure	1 (0%)	0 (0%)	1 (0%)
	Death of participant/parent/guardian	6 (1%)	6 (1%)	0 (0%)
	Withdrawal / loss to follow-up	123 (18%)	84 (19%)	39 (17%)
	Site closure	25 (4%)	18 (4%)	7 (3%)
	Other reason	2 (0%)	2 (0%)	0 (0%)
Ever AMP, age 18+	Completed study	521 (81%)	341 (80%)	180 (82%)
	Lost to follow-up	123 (19%)	84 (20%)	39 (18%)
Ever AMP, age 18+, completed study	Enrolled in AMP Up	396 (76%)	272 (80%)	124 (69%)
	Not enrolled	125 (24%)	69 (20%)	56 (31%)
Ever AMP, age 18+, lost to follow-up	Enrolled in AMP Up	30 (24%)	29 (35%)	1 (3%)
	Not enrolled	93 (76%)	55 (65%)	38 (97%)
AMP Up study status	Still on study	675 (83%)	550 (82%)	125 (91%)
	Compl protocol V1.0, not yet in V2.0	2 (0%)	2 (0%)	0 (0%)
	Death of participant	30 (4%)	30 (4%)	0 (0%)
	Severe debilitation, unable to continue	2 (0%)	1 (0%)	1 (1%)
	Participant incarcerated	10 (1%)	8 (1%)	2 (1%)
	Participant withdrew consent	24 (3%)	20 (3%)	4 (3%)
	PT/parent not willing to adhere to reqs	12 (1%)	12 (2%)	0 (0%)
	Site unable to contact participant/parent	47 (6%)	42 (6%)	5 (4%)
	Other reason	7 (1%)	7 (1%)	0 (0%)
AMP Up Lite study status	Still on study	287 (86%)	287 (86%)	0 (0%)
	Eligibility failure after pt started std	2 (1%)	2 (1%)	0 (0%)
	Death of participant/parent/guardian	6 (2%)	6 (2%)	0 (0%)
	PT/parent withdrw consnt prior std compl	5 (1%)	5 (1%)	0 (0%)
	PT/parent not willing to adhere to reqs	1 (0%)	1 (0%)	0 (0%)
	Declined transfer for Harvard followup	3 (1%)	3 (1%)	0 (0%)
	Site unable to contact participant/parent	30 (9%)	30 (9%)	0 (0%)

Note: PHIV, perinatally-acquired HIV; PHEU, perinatal HIV-exposure without perinatally-acquired HIV

Created by: /home/phacs/actgPH200/monitoring/programs/working/april_rerun/qad_1.sas on May 30, 2024

Table 14: AMP/AMP Up/AMP Up Lite Select Follow-up Characteristics of All Enrolled Participants with an Entry Visit as of Last Clinic Visit

Characteristic		AMP PHIV (N=448)		AMP PHEU (N=226)		AMP Up PHIV (N=669)		AMP Up PHEU (N=136)		AMP Up Lite PHIV (N=334)	
		Male (N=209)	Female (N=239)	Male (N=118)	Female (N=108)	Male (N=259)	Female (N=410)	Male (N=68)	Female (N=68)	Male (N=124)	Female (N=210)
Age at last visit (years)	Median	17	18	17	17	26	27	24	24	28	29
	Q1, Q3	16, 19	17, 18	16, 18	17, 18	24, 29	24, 31	23.00, 24.50	23, 25	25, 33	24, 32
	15-17	81 (39%)	75 (31%)	66 (56%)	55 (51%)						
	18-21	96 (46%)	123 (51%)	34 (29%)	36 (33%)	25 (10%)	22 (5%)	11 (16%)	8 (12%)	12 (10%)	23 (11%)
	22-25	2 (1%)	5 (2%)			96 (37%)	140 (34%)	48 (71%)	47 (69%)	22 (18%)	43 (20%)
	26-30					87 (34%)	133 (32%)	9 (13%)	13 (19%)	41 (33%)	69 (33%)
	31-35					45 (17%)	89 (22%)			35 (28%)	57 (27%)
	36-40					6 (2%)	23 (6%)			12 (10%)	14 (7%)
	41 or older					0 (0%)	3 (1%)			2 (2%)	4 (2%)
	7-14	30 (14%)	36 (15%)	18 (15%)	17 (16%)						
Ever been pregnant as of last visit*	No	160 (76%)
Ever been pregnant as of last visit*	Yes	.	15 (6%)	.	15 (14%)	.	197 (48%)	.	33 (49%)	.	
	No	.	185 (77%)	.	80 (74%)	.	211 (51%)	.	35 (51%)	.	
	Unknown	.	39 (16%)	.	13 (12%)	.	2 (0%)	.	0 (0%)	.	
	Yes	50 (24%)
Number of completed pregnancies as of last visit	0	.	225 (94%)	.	94 (87%)	.	213 (52%)	.	35 (51%)	.	160 (76%)
	1	.	9 (4%)	.	9 (8%)	.	94 (23%)	.	13 (19%)	.	40 (19%)
	2	.	5 (2%)	.	4 (4%)	.	58 (14%)	.	14 (21%)	.	6 (3%)
	3	.		.	1 (1%)	.	24 (6%)	.	3 (4%)	.	3 (1%)
	4	.		.		.	11 (3%)	.	2 (3%)	.	
	5	.		.		.	7 (2%)	.	1 (1%)	.	1 (0%)
	6	.		.		.	3 (1%)	.		.	
Seroconverted to HIV as of last visit	No	209 (100%)	239 (100%)	118 (100%)	108 (100%)	259 (100%)	410 (100%)	67 (99%)	68 (100%)	124 (100%)	210 (100%)
	Yes							1 (1%)	0 (0%)		

Characteristic		AMP PHIV (N=448)		AMP PHEU (N=226)		AMP Up PHIV (N=669)		AMP Up PHEU (N=136)		AMP Up Lite PHIV (N=334)	
		Male (N=209)	Female (N=239)	Male (N=118)	Female (N=108)	Male (N=259)	Female (N=410)	Male (N=68)	Female (N=68)	Male (N=124)	Female (N=210)
Death	No	205 (98%)	237 (99%)	118 (100%)	108 (100%)	249 (96%)	390 (95%)	68 (100%)	68 (100%)	120 (97%)	208 (99%)
	Yes	4 (2%)	2 (1%)			10 (4%)	20 (5%)			4 (3%)	2 (1%)

*For AMP/AMP Up, this is based on chart abstraction. Completed pregnancies include live births, spontaneous/elective abortions, and stillbirths. For AMP Up Lite, this is based on form PH5803, Q1 and the report reasons had to be non-missing

Note: PHIV, perinatally-acquired HIV; PHEU: perinatal HIV exposure but without perinatally-acquired HIV

Created by: /home/phacs/actgPH200/monitoring/detlprogs/amp_ampup_sero_pregnancy.sas on May 12, 2024

Table 15: AMP/AMP Up/AMP Up Lite - Deaths by Demographic and Clinical Characteristics

Characteristic		PHIV (N=42)
Study	AMP	6 (14%)
	AMP Up	30 (71%)
	AMP Up Lite	6 (14%)
Age at death	12-17 years	1 (2%)
	18-24 years	11 (26%)
	25-39 years	30 (71%)
Sex	Male	18 (43%)
	Female	24 (57%)
Race	Black or African American	35 (83%)
	White	6 (14%)
	More than One Race	1 (2%)
Ethnicity	Hispanic or Latino	7 (17%)
	Not Hispanic or Latino	35 (83%)
Cause of death category	Unknown, no information available	10 (24%)
	HIV infection or HIV-related diagnosis	16 (38%)
	Non-HIV diagnosis	11 (26%)
	Other, specify	5 (12%)
CD4 count (copies/mm ³) ^{1, 2}	Median	50.50
	0-250	18 (43%)
	251-500	1 (2%)
	501-750	2 (5%)
	751-1000	1 (2%)
	Unknown	20 (48%)
HIV-1 RNA (copies/mL) ^{1, 2}	Median	28,373.50
	≤75	5 (12%)
	76-200	1 (2%)
	401-5000	2 (5%)
	5001-50000	5 (12%)
	50000+	9 (21%)
	Unknown	20 (48%)

Notes:

(1) Only CD4/HIV-1 data within 12 months of death and measures closest to the time of death were considered.

(2) CD4/HIV-1 data only available for AMP Up but not AMP Up Lite.

(3) PHIV: perinatally-acquired HIV; PHEU: perinatal HIV exposure but without perinatally-acquired HIV.

Created by: /home/phacs/actgPH300/monitoring/programs/mortality_report.sas on May 24, 2024

Table 16: AMP Up - Age as of Last In-person Visit or Chart Abstraction Date of Participants Still on Study

		Study and HIV Status	
		AMP Up PHIV (N=550)	AMP Up PHEU (N=125)
Age (years)	Median	26.86	24.43
	Q1, Q3	24.55, 30.97	23.10, 25.27
	18-21	38 (7%)	17 (14%)
	22-25	203 (37%)	88 (70%)
	26-30	172 (31%)	19 (15%)
	31-35	102 (19%)	0 (0%)
	36-40	32 (6%)	0 (0%)
	41 or older	2 (0%)	0 (0%)
	No entry visit reported	1 (0%)	1 (1%)

Notes:

(1) PHIV: perinatally-acquired HIV; PHEU, perinatal HIV exposure but without perinatally-acquired HIV. Age is based on the date of last in-person visit or chart abstraction date

Created by: /home/phacs/actgPH200/monitoring/detlprogs/current_status.sas on May 13, 2024

Table 17: AMP Up Lite - Age as of Last In-person Visit or Chart Abstraction Date of Participants Still on Study

		YAPHIV (N=287)
Age (years)	Median	29
	Q1, Q3	25, 33
	18-21	27 (9%)
	22-25	49 (17%)
	26-30	93 (32%)
	31-35	86 (30%)
	36-40	26 (9%)
	41 or older	6 (2%)

Note: PHIV: perinatally-acquired HIV. All participants are on study. Age is based on the date of last in-person visit or chart abstraction date.

Created by: /home/phacs/actgPH400/monitoring/programs/current_status.sas on May 14, 2024

Table 18: AMP - Clinical Characteristics as of Last In-person Visit or Chart Abstraction Date of Participants Living with Perinatal HIV

		Study AMP (N=448)
CDC Category	N/A/B	335 (75%)
	C	113 (25%)
CD4 count (copies/mm ³) ⁽³⁾	Median	627
	0-250	48 (11%)
	251-500	102 (23%)
	501-750	134 (30%)
	751-1000	85 (19%)
	1001+	63 (14%)
	Unknown	16 (4%)
CD4 percent ⁽³⁾	Median	34
	< 15%	45 (10%)
	15-25%	61 (14%)
	25% or more	325 (73%)
	Unknown	17 (4%)
HIV-1 RNA (copies/mL) ^(3, 4)	≤75	239 (53%)
	76 - 200	20 (4%)
	201 - 400	14 (3%)
	401 - 5000	69 (15%)
	5001 - 50,000	60 (13%)
	50,000+	26 (6%)
	Unknown	20 (4%)
ARV regimen	cART with INSTI/EI/FI	108 (24%)
	cART with PI	203 (45%)
	cART with NNRTI	91 (20%)
	Other ARV	15 (3%)
	No ARV	31 (7%)

Notes:

(1) HIV-1 RNA viral load measurements less than 400 copies/mL are treated as equal to 400 copies/mL when calculating the median. Clinical characteristics are based on last recorded measurement.

(2) ARV regimen categories are hierarchical.

(3) To determine the CD4 count/percent and HIV-1 viral load, only CD4/HIV-1 data within 12 months prior to the most recent in-person visit or chart abstraction date were considered.

(4) Six YPHIV participants with HIV-1 RNA viral loads below detection limit but above 75 copies/mL were classified as HIV-1 RNA level ≤75 copies/mL.

(5) 3 PHIV participants did not have entry visits and thus were excluded

Created by: /home/phacs/actgPH200/monitoring/detlprogs/current_status.sas on May 13, 2024

Table 19: AMP Up/AMP Up Lite - Clinical Characteristics as of Last In-person Visit or Chart Abstraction Date of Participants Living with Perinatal HIV Still on Study

		Study	
		AMP Up (N=550)	AMP Up Lite (N=287)
CDC Category	N/A/B	402 (73%)	209 (73%)
	C	148 (27%)	78 (27%)
CD4 count (copies/mm ³) ⁽³⁾	Median	614	557
	0-250	41 (7%)	28 (10%)
	251-500	75 (14%)	35 (12%)
	501-750	84 (15%)	39 (14%)
	751-1000	59 (11%)	29 (10%)
	1001+	38 (7%)	20 (7%)
	Unknown	253 (46%)	136 (47%)
	CD4 percent ⁽³⁾	Median	33
	< 15%	31 (6%)	28 (10%)
	15-25%	57 (10%)	21 (7%)
	25% or more	209 (38%)	102 (36%)
	Unknown	253 (46%)	136 (47%)
HIV-1 RNA (copies/mL) ⁽³⁾	≤75	221 (40%)	119 (41%)
	76 - 200	16 (3%)	10 (3%)
	201 - 400	7 (1%)	5 (2%)
	401 - 5000	18 (3%)	11 (4%)
	5001 - 50,000	25 (5%)	9 (3%)
	50,000+	11 (2%)	9 (3%)
	Unknown	252 (46%)	124 (43%)
	ARV regimen	cART with INSTI/EI/FI	389 (71%)
cART with PI		36 (7%)	27 (9%)
cART with NNRTI		46 (8%)	25 (9%)
Other ARV		45 (8%)	10 (3%)
No ARV		25 (5%)	9 (3%)
Missing ARV information		9 (2%)	28 (10%)

Notes:

(1) HIV-1 RNA viral load measurements less than 400 copies/mL are treated as equal to 400 copies/mL when calculating the median. Clinical characteristics are based on last recorded measurement.

(2) ARV regimen categories are hierarchical.

(3) To determine the CD4 count/percent and HIV-1 viral load, only CD4/HIV-1 data within 12 months prior to the most recent in-person visit or chart abstraction date were considered.

Created by: /home/phacs/actgPH200/monitoring/detlprogs/current_status.sas on May 13, 2024

Table 20: AMP Up - Individual ARV Drugs at Entry

Class Drug	Label	N	Percent
NRTI ftc	FTC/Coviracil	392	59.4
NRTI tdf	Tenofovir/TDF	254	38.5
NRTI taf	Tenofovir Alafenamide (TAF)	155	23.5
NRTI _3tc	3tc/Epivir/Lamivudine	135	20.5
NRTI abc	Abacavir	110	16.7
NRTI zdv	ZDV/AZT	38	5.8
NRTI ddi	Didanosine/Videx/DDI	13	2.0
NRTI d4t	Stavudine/d4T	9	1.4
NNRTI rpv	Rilpivirine/TMC-278	108	16.4
NNRTI etr	Etravirine/TMC-125	38	5.8
NNRTI efv	Efavirenz/Sustiva/DMP-266	34	5.2
NNRTI nvp	Nevirapine/Viramune/NVP	5	0.8
PI rtvboost	Ritonavir/Norvir/RTV (Boost)	201	30.5
PI drv	Prezista/Darunavir/TMC-114	176	26.7
PI atv	Atazanavir/ATV	65	9.8
PI kal	Kaletra	32	4.8
PI nfv	Nelfinavir/Viracept/NFV	9	1.4
PI sqv	Saquinavir/Invirase/Fortovase/SQV	3	0.5
PI tpv	Tipranavir	2	0.3
PI fpv	Fosamprenavir	1	0.2
FI/EI mvc	Maraviroc	11	1.7
FI/EI enf	T-20/Pentafuside/Enfuvirtide/ENF	3	0.5
INSTI dtg	Dolutegravir/GSK-1349572	151	22.9
INSTI evg	Elvitegravir/GS-9137	88	13.3
INSTI ral	Raltegravir/Isentress	70	10.6
INSTI bic	Bictegravir	35	5.3
BOOSTER cob1	Cobicistat	139	21.1

Created by: /home/phacs/actgPH300/monitoring/detlprogs/entry_visit_arv.sas on May 14, 2024

Table 21: AMP Up Lite - Individual ARV Drugs at Entry

Class	Drug	Label	N	Percent
NRTI	ftc	FTC/Coviracil	244	73.3
NRTI	taf	Tenofovir Alafenamide (TAF)	177	53.2
NRTI	tdf	Tenofovir/TDF	76	22.8
NRTI	_3tc	3tc/Eпивir/Lamivudine	25	7.5
NRTI	abc	Abacavir	23	6.9
NRTI	zdv	ZDV/AZT	6	1.8
NRTI	ddi	Didanosine/Videx/DDI	2	0.6
NNRTI	rpv	Rilpivirine/TMC-278	44	13.2
NNRTI	etr	Etravirine/TMC-125	15	4.5
NNRTI	efv	Efavirenz/Sustiva/DMP-266	11	3.3
NNRTI	nvp	Nevirapine/Viramune/NVP	2	0.6
NNRTI	dor	Doravirine	1	0.3
PI	drv	Prezista/Darunavir/TMC-114	67	20.1
PI	rtv	Ritonavir/Norvir/RTV	48	14.4
PI	atv	Atazanavir/ATV	28	8.4
PI	kal	Kaletra	2	0.6
PI	sqv	Saquinavir/Invirase/Fortovase/SQV	1	0.3
FI/EI	mvc	Maraviroc	4	1.2
INSTI	dtg	Dolutegravir/GSK-1349572	91	27.3
INSTI	evg	Elvitegravir/GS-9137	68	20.4
INSTI	bic	Bictegravir	34	10.2
INSTI	ral	Raltegravir/Isentress	18	5.4
BOOSTER	cobi	Cobicistat	106	31.8

Created by: /home/phacs/actgPH400/monitoring/programs/entry_visit_arv.sas on May 14, 2024

Table 22: AMP Up - Individual ARV Drugs at Last Clinical Visit for Participants Still On Study

Class Drug	Label	N	Percent
NRTI ftc	FTC/Coviracil	380	68.8
NRTI taf	Tenofovir Alafenamide (TAF)	343	62.1
NRTI _3tc	3tc/Efavir/Lamivudine	74	13.4
NRTI abc	Abacavir	64	11.6
NRTI tdf	Tenofovir/TDF	53	9.6
NRTI zdv	ZDV/AZT	8	1.4
NRTI d4t	Stavudine/d4T	1	0.2
NNRTI rpv	Rilpivirine/TMC-278	103	18.7
NNRTI etr	Etravirine/TMC-125	13	2.4
NNRTI efv	Efavirenz/Sustiva/DMP-266	5	0.9
PI drv	Prezista/Darunavir/TMC-114	119	21.6
PI rtvboost	Ritonavir/Norvir/RTV (Boost)	51	9.2
PI atv	Atazanavir/ATV	22	4.0
PI kal	Kaletra	4	0.7
PI nfv	Nelfinavir/Viracept/NFV	1	0.2
PI sqv	Saquinavir/Invirase/Fortovase/SQV	1	0.2
FI/EI mvc	Maraviroc	7	1.3
INSTI dtg	Dolutegravir/GSK-1349572	156	28.3
INSTI bic	Bictegravir	155	28.1
INSTI evg	Elvitegravir/GS-9137	88	15.9
INSTI ral	Raltegravir/Isentress	25	4.5
BOOSTER cob1	Cobicistat	162	29.3

Created by: /home/phacs/actgPH300/monitoring/det/progs/current_arv.sas on May 14, 2024

Table 23: AMP Up Lite - Individual ARV Drugs at Last Clinical Visit for Participants Still On Study

Class	Drug Label	N	Percent
NRTI	ftc FTC/Coviracil	221	77.0
NRTI	taf Tenofovir Alafenamide (TAF)	186	64.8
NRTI	tdf Tenofovir/TDF	40	13.9
NRTI	_3tc 3tc/Epivir/Lamivudine	17	5.9
NRTI	abc Abacavir	16	5.6
NRTI	zdv ZDV/AZT	2	0.7
NNRTI	rpv Rilpivirine/TMC-278	39	13.6
NNRTI	etr Etravirine/TMC-125	9	3.1
NNRTI	efv Efavirenz/Sustiva/DMP-266	5	1.7
NNRTI	dor Doravirine	4	1.4
PI	drv Prezista/Darunavir/TMC-114	55	19.2
PI	rtv Ritonavir/Norvir/RTV	30	10.5
PI	atv Atazanavir/ATV	21	7.3
FI/EI	mvc Maraviroc	3	1.0
INSTI	dtg Dolutegravir/GSK-1349572	74	25.8
INSTI	bic Bictegravir	73	25.4
INSTI	evg Elvitegravir/GS-9137	44	15.3
INSTI	ral Raltegravir/Isentress	10	3.5
INSTI	cab Cabotegravir	1	0.3
BOOSTER	cobi Cobicistat	81	28.2

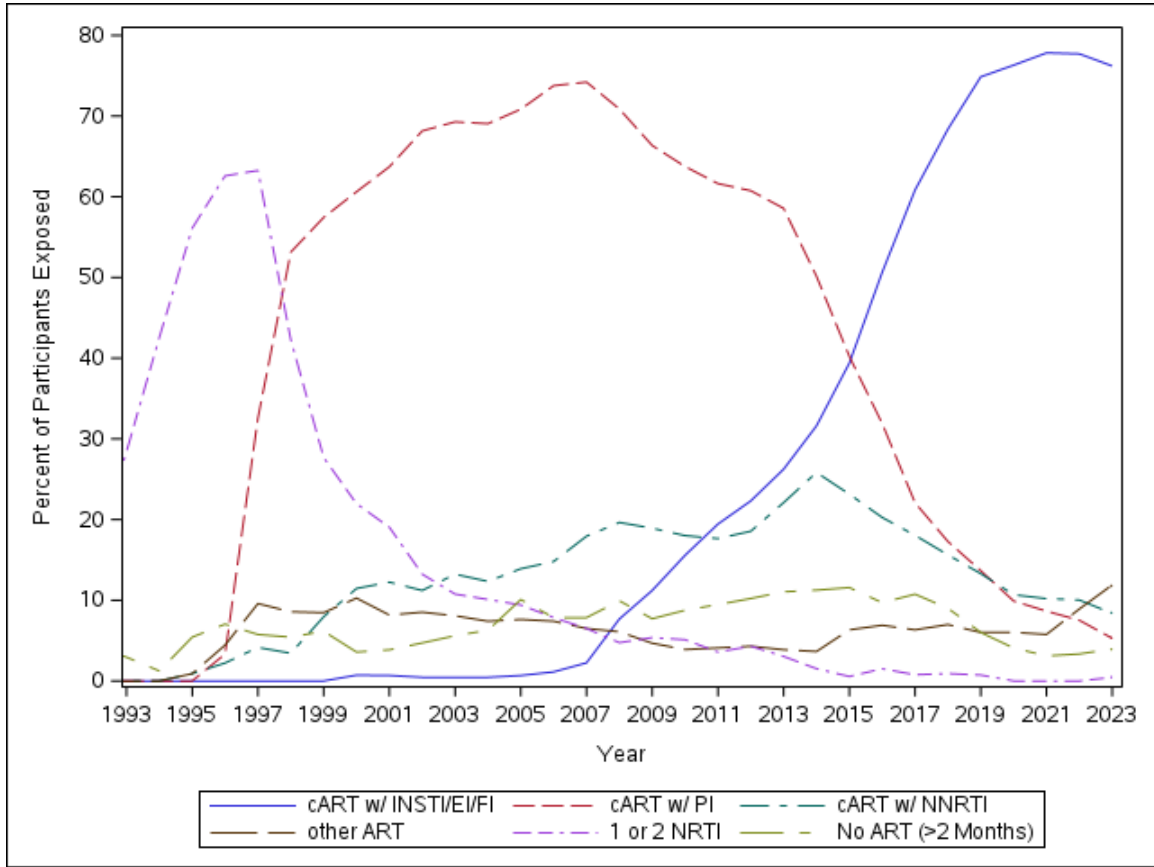
Created by: /home/phacs/actgPH400/monitoring/programs/current_arv.sas on May 14, 2024

Table 24: AMP - Lifetime Exposure to ARV Drug Classes and Individual Drugs, From Reported Regimens

Class/Drug	Total (N = 448)
Any NRTI	446 (100%)
Tenofovir/TDF	270 (60%)
FTC/Coviracil	253 (56%)
3tc/Epivir/Lamivudine	418 (93%)
Abacavir	228 (51%)
ZDV/AZT	378 (84%)
Didanosine/Videx/DDI	306 (68%)
Stavudine/d4T	344 (77%)
Zalcitabine/DDC	16 (4%)
Tenofovir Alafenamide	28 (6%)
Any NNRTI	335 (75%)
Efavirenz/Sustiva/DMP-266	205 (46%)
Etravirine/TMG-125	34 (8%)
Nevirapine/Viramune/NVP	157 (35%)
Delavirdine/DLV	2 (0%)
Rilpivirine/TMC-278	50 (11%)
Any PI	407 (91%)
Ritonavir/Norvir/RTV (Only)	139 (31%)
Ritonavir/Norvir/RTV (Boost)	335 (75%)
Kaletra	255 (57%)
Atazanavir/ATV	141 (31%)
Prezista/Darunavir/TMC-114	98 (22%)
Nelfinavir/Viracept/NFV	265 (59%)
Saquinavir/Invirase/Fortavase/SQV	50 (11%)
Amprenavir/APV	30 (7%)
Tipranavir	13 (3%)
Fosamprenavir	15 (3%)
Indinavir/Crixivan/IDV	28 (6%)
Any FI/EI	26 (6%)
Maraviroc	13 (3%)
T-20/Pentafuside/Enfuvirtide/ENF	13 (3%)
Any INSTI	127 (28%)
Raltegravir/Isentress	88 (20%)
Dolutegravir/GSK-1349572	33 (7%)
Elvitegravir/GS-9137	20 (4%)

Created by: /home/phacs/actgPH200/monitoring/det/progs/arv_figures.sas on May 14, 2024

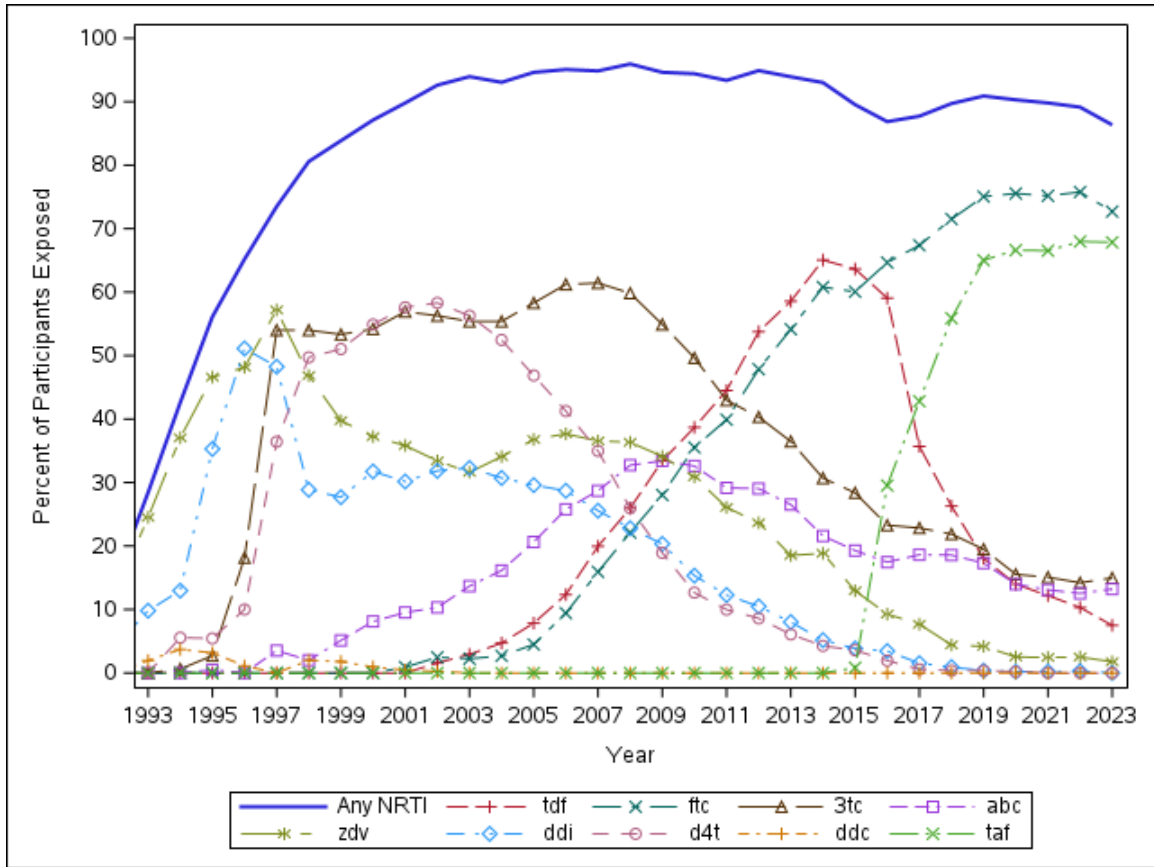
Figure 1: AMP/AMP Up - ARV Trends Over Time (1993 - 2023)



Note: No ART indicates a drug holiday of >56 days.

Created by: /home/phacs/actgPH200/monitoring/det/progs/arv_figures_amp_ampup.sas on May 30, 2024

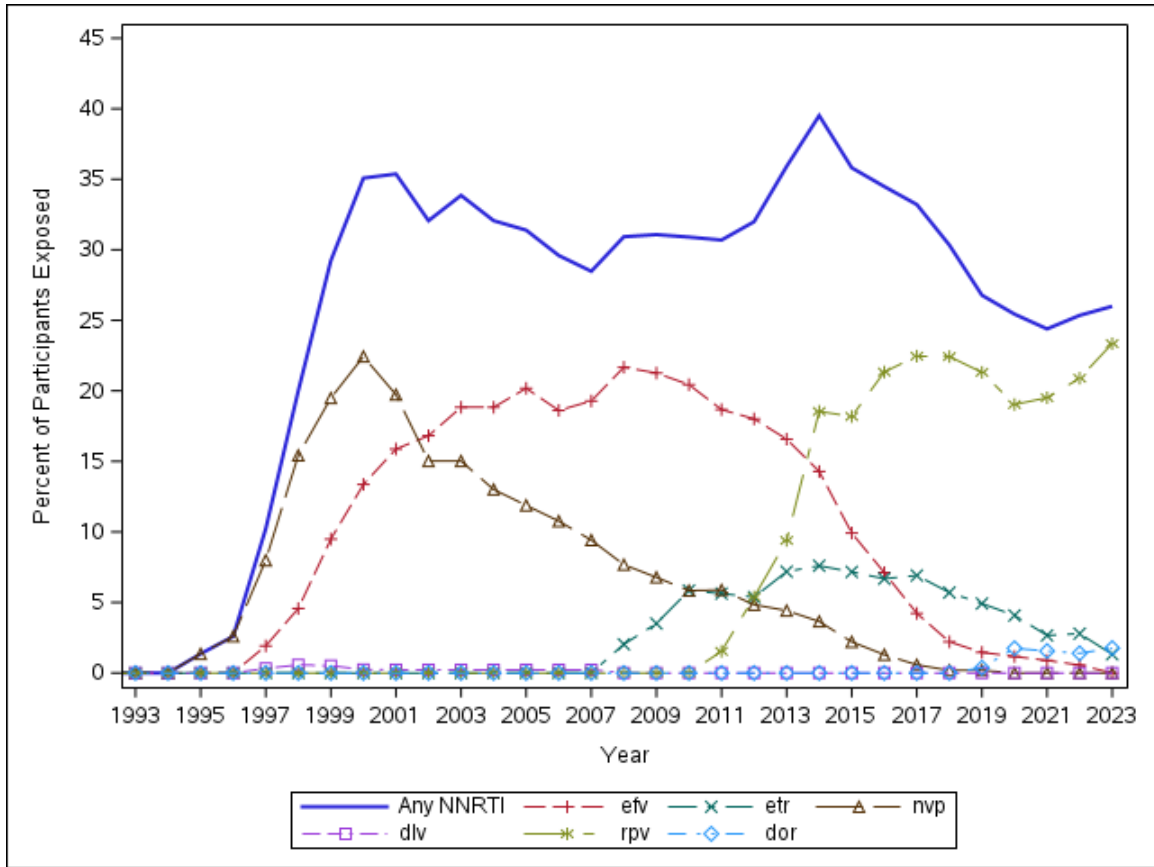
Figure 2: AMP/AMP Up - NRTI Use, 1993 - 2023



Note: Denominator for percentages is number of participants exposed to ARVs.

Created by: /home/phacs/actgPH200/monitoring/det/progs/arv_figures_amp_ampup.sas on May 30, 2024

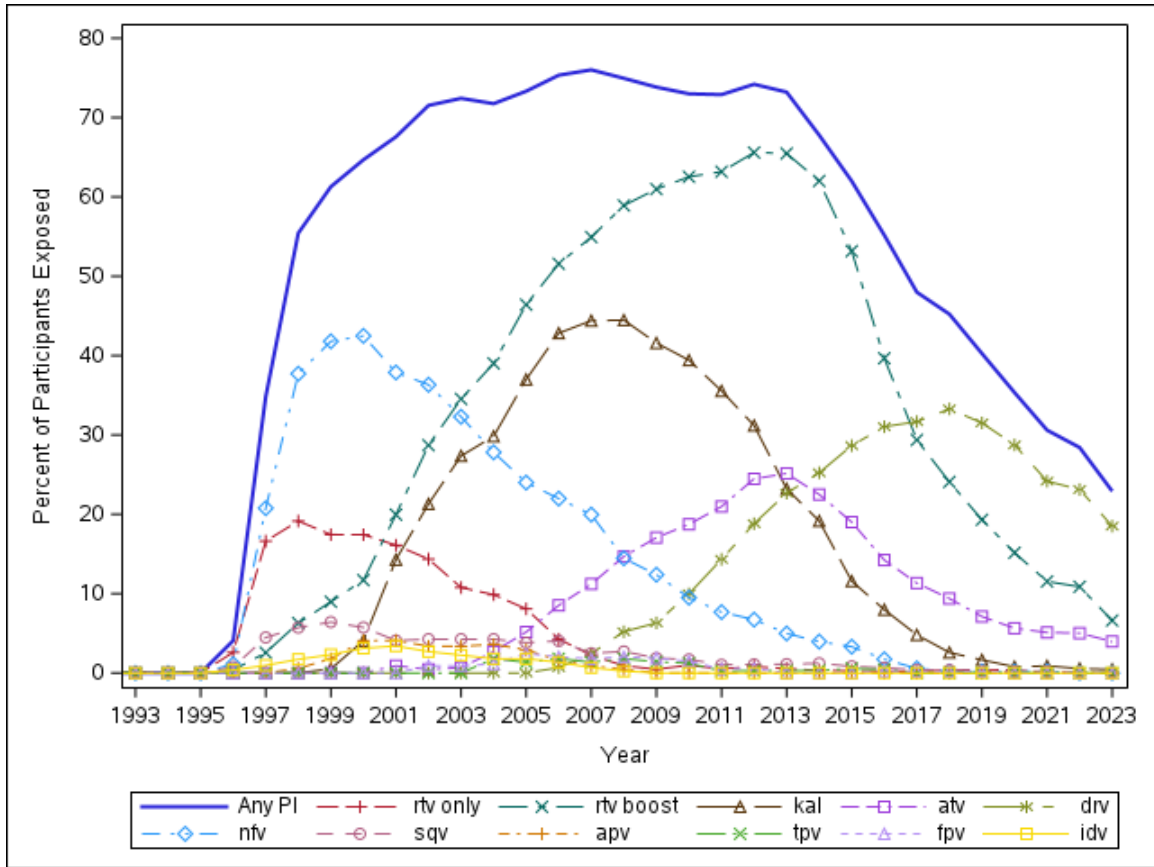
Figure 3: AMP/AMP Up - NNRTI Use, 1993 - 2023



Note: Denominator for percentages is number of participants exposed to ARVs.

Created by: /home/phacs/actgPH200/monitoring/det/progs/arv_figures_amp_ampup.sas on May 30, 2024

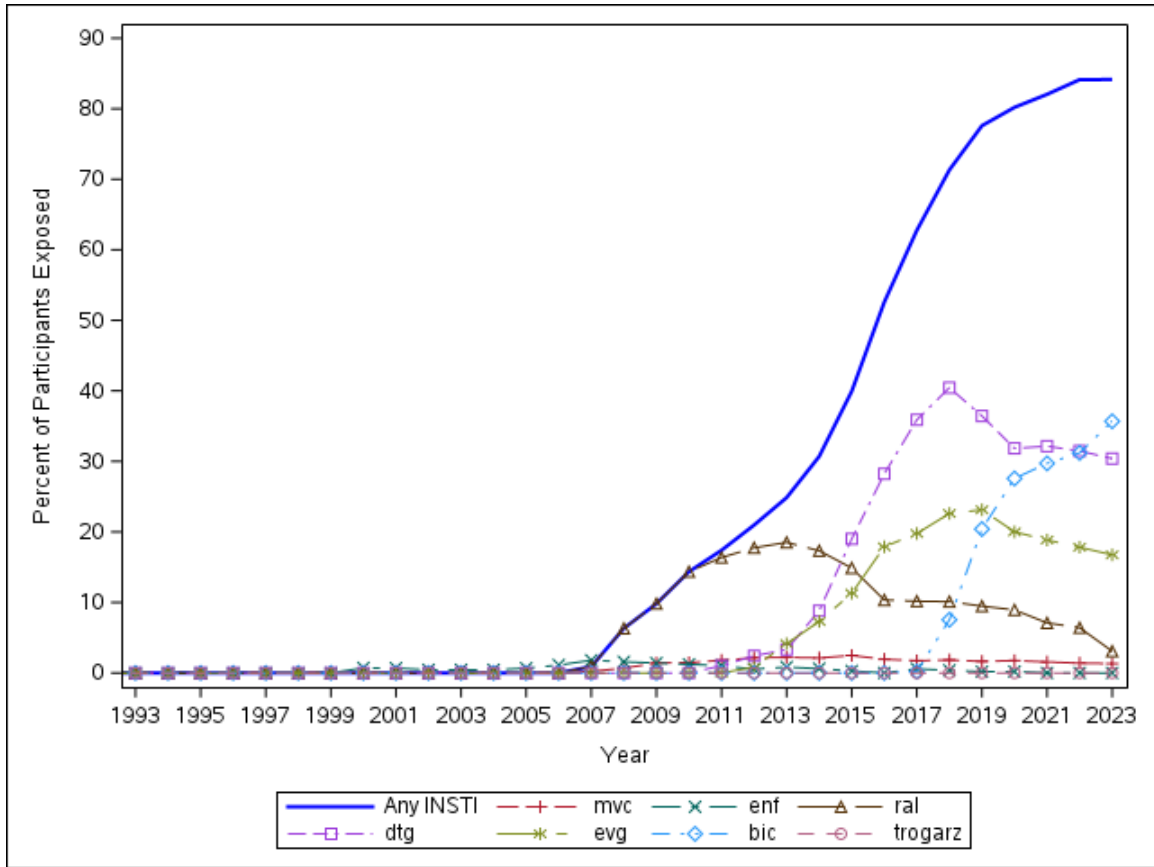
Figure 4: AMP/AMP Up - PI Use, 1993 - 2023



Note: Denominator for percentages is number of participants exposed to ARVs.

Created by: /home/phacs/actgPH200/monitoring/det/progs/arv_figures_amp_ampup.sas on May 30, 2024

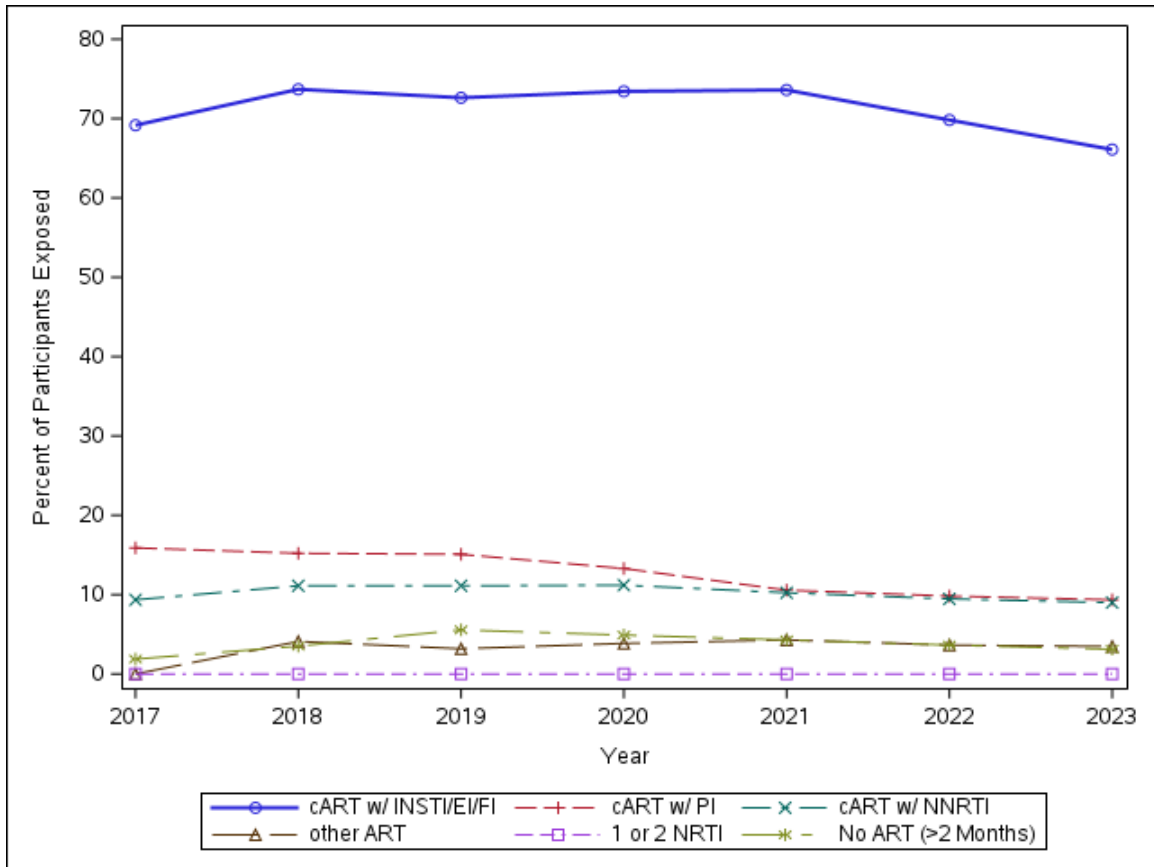
Figure 5: AMP/AMP Up - FI/EI and INSTI Use, 1993 - 2023



Note: Denominator for percentages is number of participants exposed to ARVs.

Created by: /home/phacs/actgPH200/monitoring/det/progs/arv_figures_amp_ampup.sas on May 30, 2024

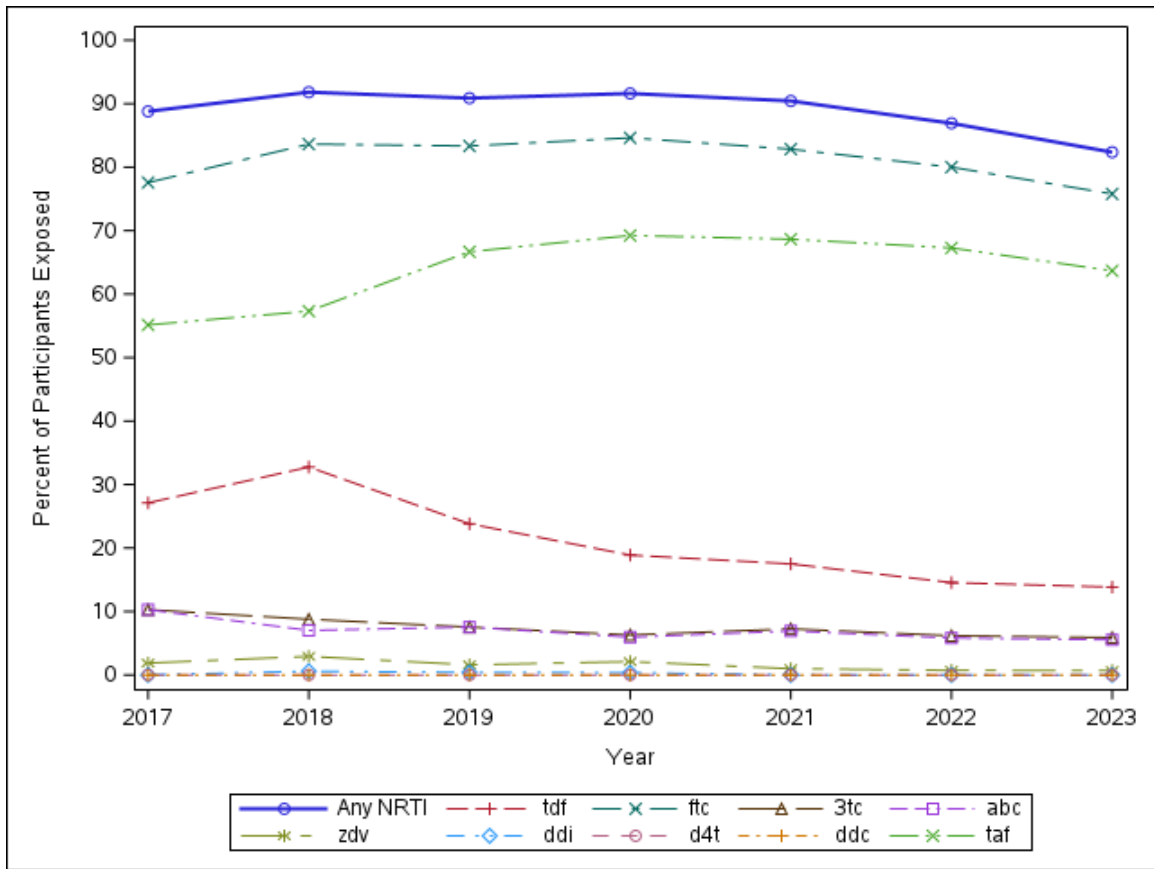
Figure 6: AMP Up Lite - ARV Trends Over Time (2017-2023)



Note: No ART indicates a drug holiday of >56 days.

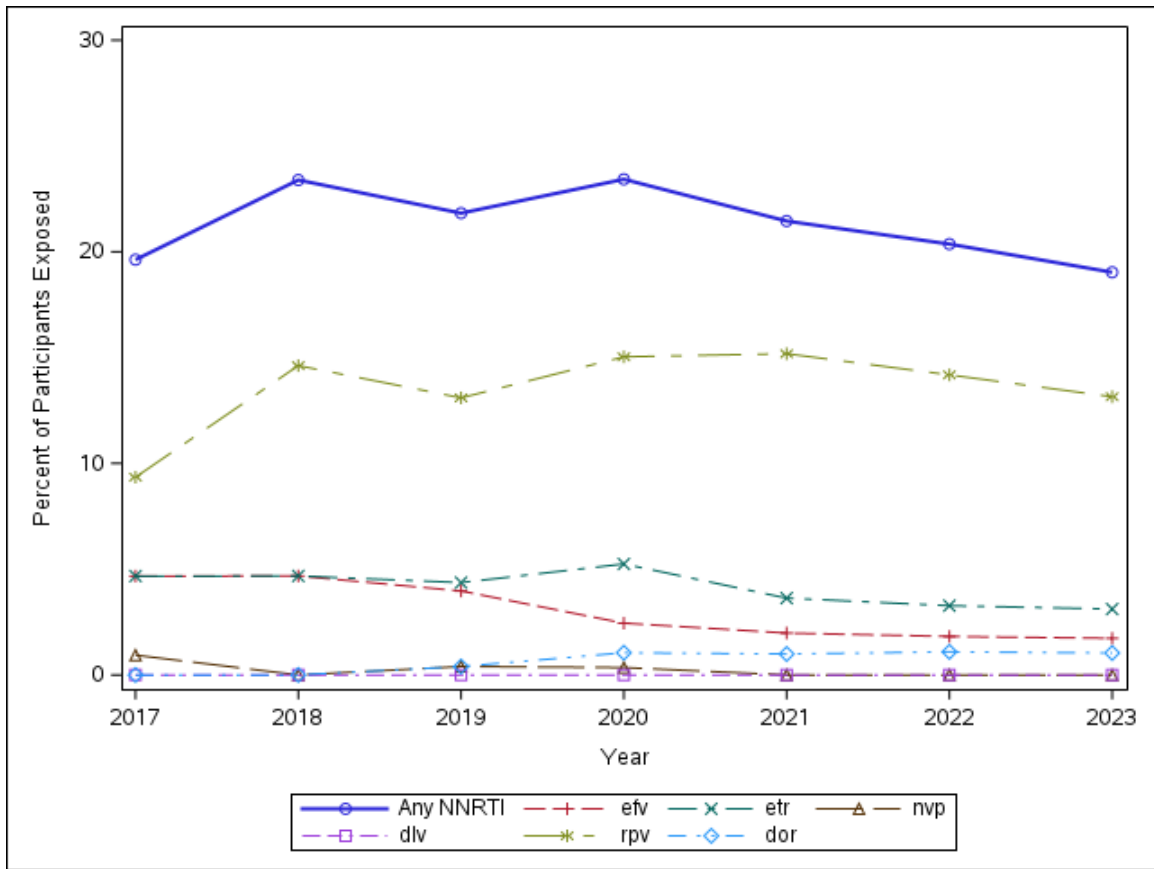
Created by: /home/phacs/actgPH400/monitoring/programs/arv_figures_auplite.sas on May 30, 2024

Figure 7: AMP Up Lite - NRTI Use, 2017 - 2023



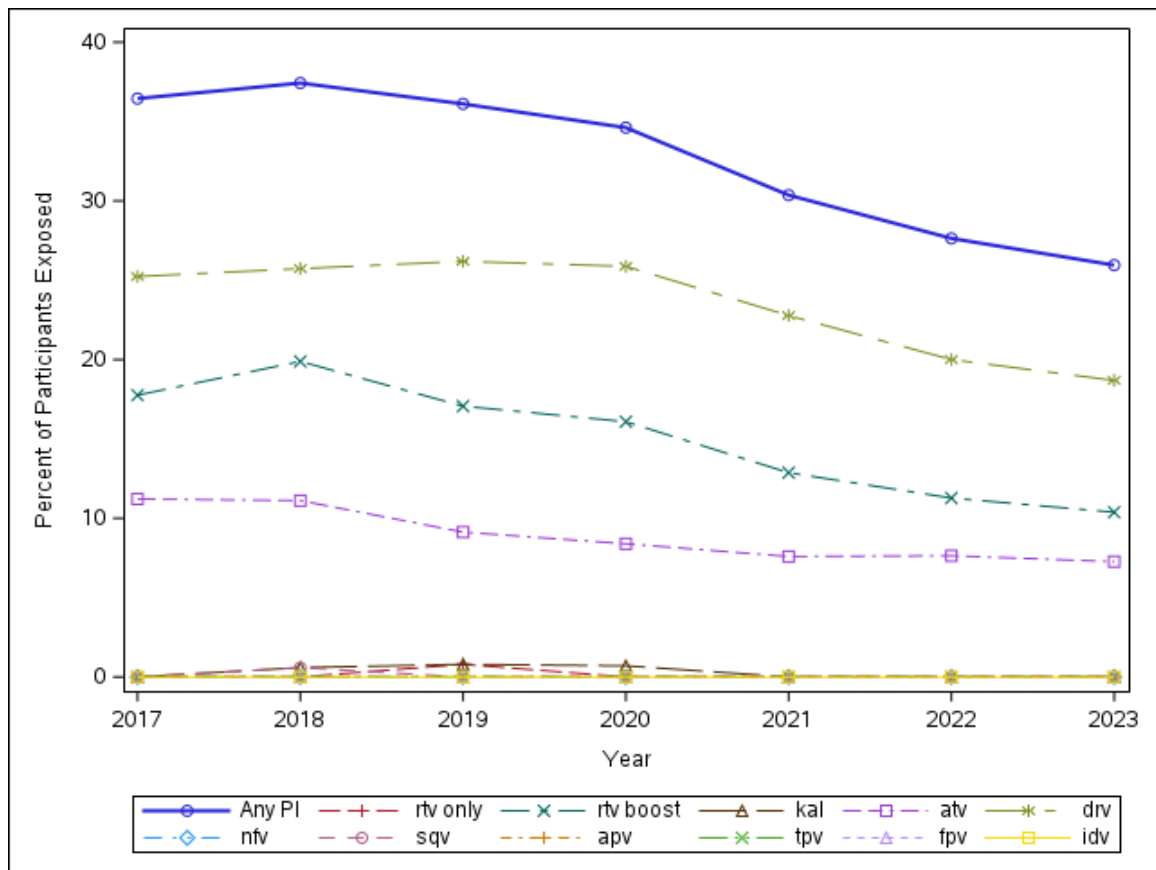
Note: Denominator for percentages is number of participants exposed to ARVs.

Figure 8: AMP Up Lite - NNRTI Use, 2017 - 2023



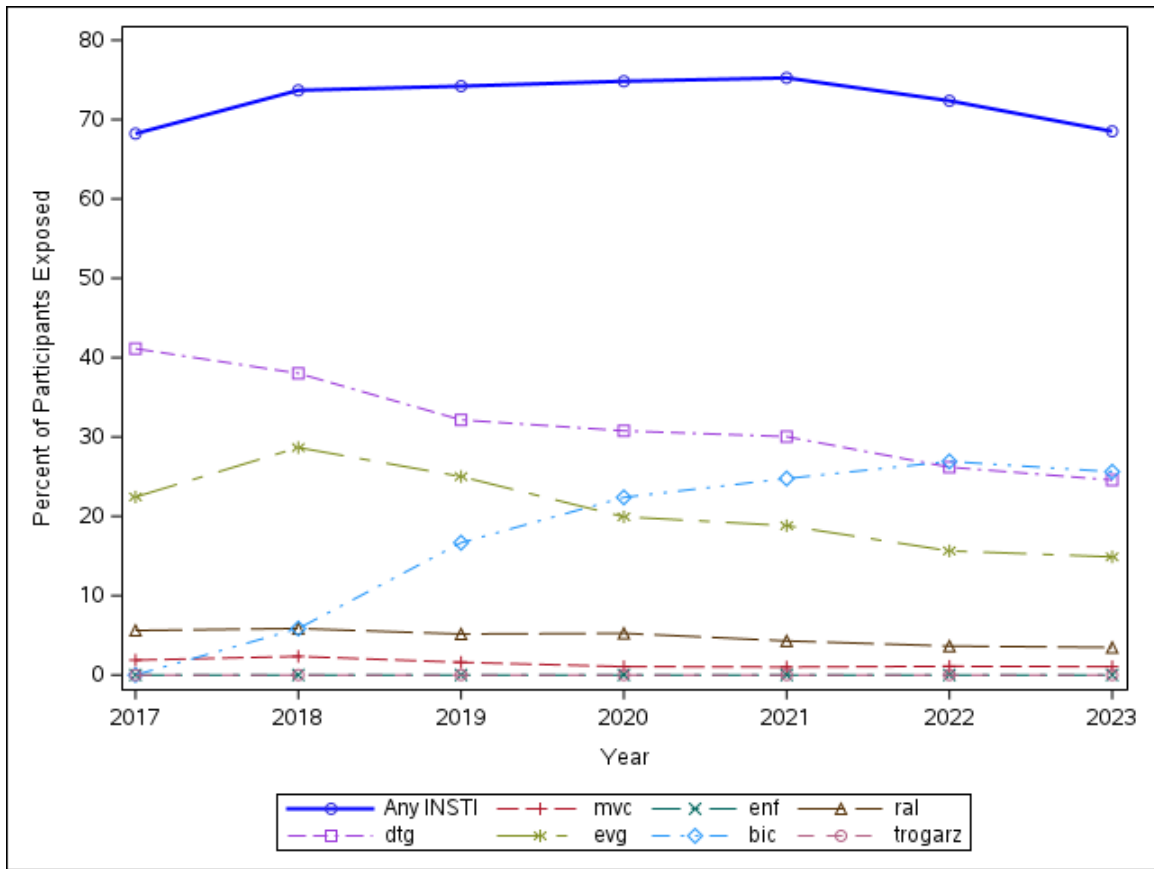
Note: Denominator for percentages is number of participants exposed to ARVs.

Figure 9: AMP Up Lite - PI Use, 2017 - 2023



Note: Denominator for percentages is number of participants exposed to ARVs.

Figure 10: AMP Up Lite - FI/EI and INSTI Use, 2017 - 2023



Note: Denominator for percentages is number of participants exposed to ARVs.

